



Art Exposure

Adaptable Academic View Enlivened

Australian/New Zealand Edition



Art, in any form, has the power to advance human connection in an increasingly fragmented world. As a universal language and change agent, art intervenes to inspire, heal and unite. Mohawk Group celebrates the interconnectivity of artistic form and expression with an imaginative collection of products with universal appeal. Representing a truly global product launch, the patterns, textures and colours originate from unexpected art interventions. Manufactured in our facilities around the world, these products are globally accessible.

Adaptable
Academic View
Enlivened

Expose your creative potential with the three elegant textures in Art Exposure. Academic View reveals a subtle mash up of organic and urban reflections. Adaptable lives up to its name with a rich and comforting solid tweed to coordinate with the collection's diverse pattern offerings, and Enlivened's geometric motif is inspired by architectural elements. Mohawk Group believes design can be transformative, and we invite you to create your own art intervention with Art Exposure.



Academic View 959 Slate and Adaptable 924 Platinum (Multi-Directional)
Cover: Academic View 958 Ecu (Brick Ashlar)



Adaptable COLOURWAYS



Adaptable 569 Cadet



Adaptable 853 Fallow



Adaptable 924 Platinum



Adaptable 958 Ecrú



Adaptable 959 Slate



Adaptable 989 Charcoal



Adaptable 959 Slate and 924 Platinum (Vertical Ashlar)



Academic View COLOURWAYS



Academic View 569 Cadet



Academic View 853 Fallow



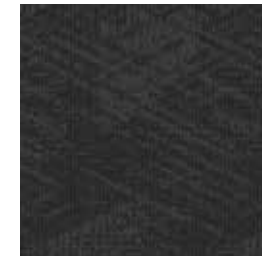
Academic View 924 Platinum



Academic View 958 Ecrú



Academic View 959 Slate



Academic View 989 Charcoal



Academic View 959 Slate, Adaptable 924 Platinum (Multi-Directional)



Mohawk Group

Enlivened COLOURWAYS



Enlivened 569 Cadet



Enlivened 853 Fallow



Enlivened 924 Platinum



Enlivened 958 Ecrú



Enlivened 959 Slate



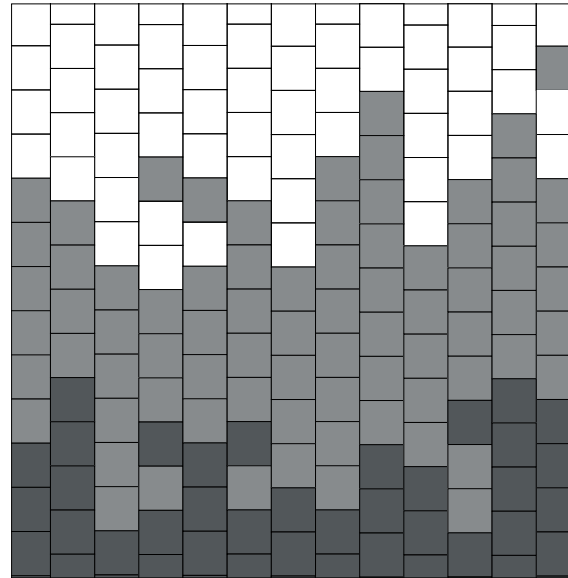
Enlivened 989 Charcoal

Enlivened 958 Ecrú (Brick Ashlar)

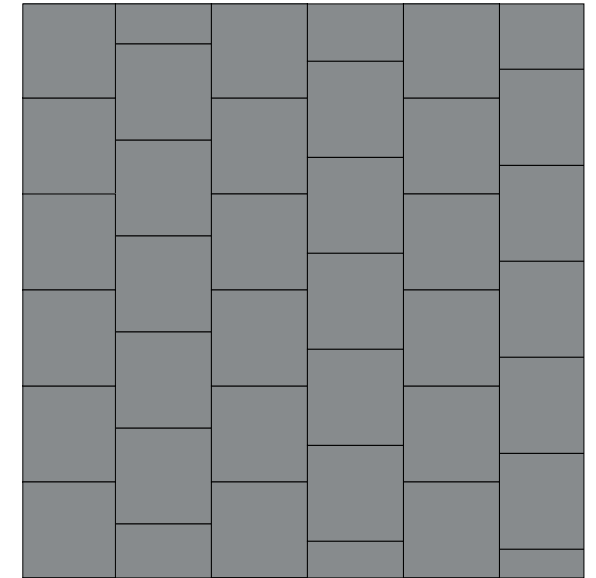


Installation Inspirations

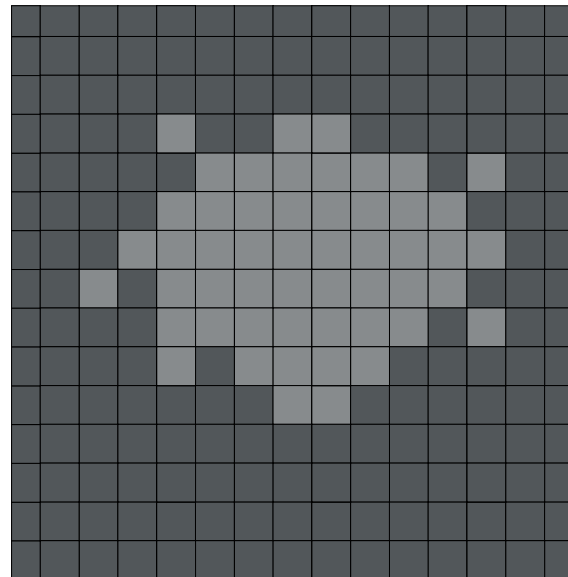
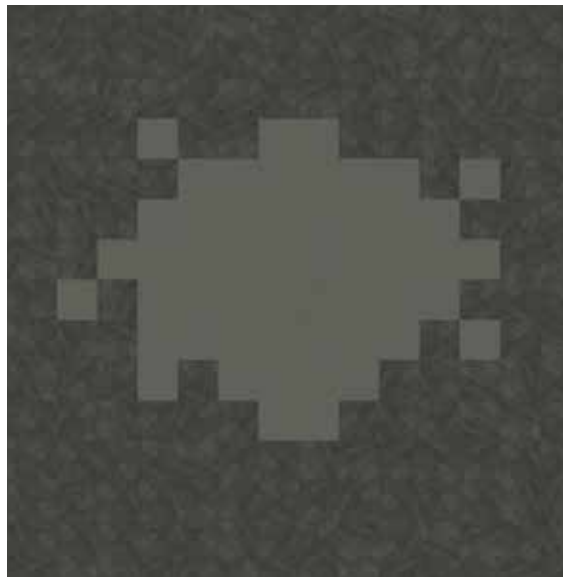
The installation ideas featured here are a small sampling of the infinite possibilities offered in the Art Exposure Collection.



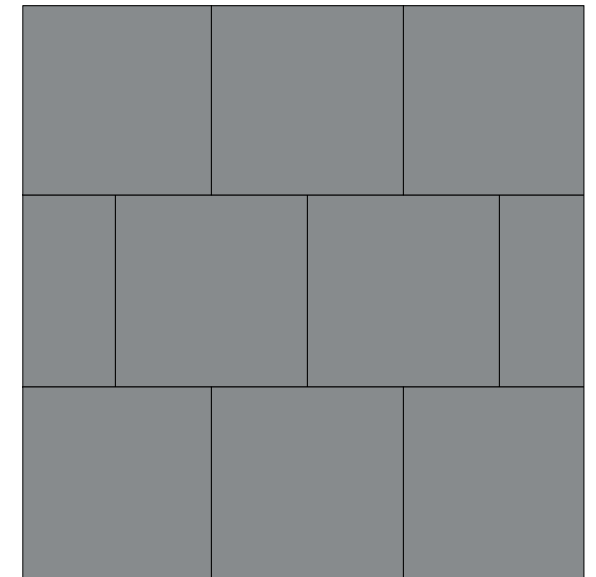
Adaptable 924 Platinum, 959 Slate, 989 Charcoal (Vertical Ashlar)



Academic View 958 Ecrú (Ashlar)



Academic View 959 Slate, Adaptable 924 Platinum (Multi-Directional)



Enlivened 958 Ecrú (Brick)



Colorstrand® FIBRE

For over 15 years, Colorstrand® fibre has continually exceeded the demanding expectations of our customers for their projects. With the design flexibility and colour intensity of solution dyed fibre, Colorstrand® delivers lasting beauty and value.

PERFORMANCE

- Exceptional colourfastness to light, atmospheric contaminants and harsh cleaning agents so colours resist fading and stay bright
- Eco Sentry Plus® soil and stain protection keeps your investment looking newer longer
- A durable fibre, engineered to suit the heavy commercial foot traffic

BUDGET

- Our vertically integrated fibre production allows cost control of products
- Numerous carpet ranges available at value engineered budgets

SUSTAINABILITY

- Colorstrand® contains a minimum of 30% pre-consumer recycled content by total weight**
- This Colorstrand® product is recyclable through our product stewardship program

DESIGN

- A wide variety of colours for excellent design flexibility

SERVICE

- This Colorstrand® product is in-stock locally and serviced by local consultants for superior lead times and service reliability

Enviro Bac® CARPET TILE BACKING SYSTEM

Enviro Bac® is a dimensionally stable, breathable carpet tile backing system offering exceptional performance features. Made locally in Australia, Enviro Bac® is a healthier carpet backing solution that has been trusted in commercial buildings around the country for over 20 years.

PERFORMANCE

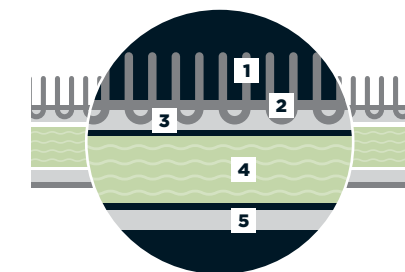
- Trusted for over 20 years in commercial applications
- Provides exceptional dimensional stability, preventing the carpet tile from stretching, shrinking or curling
- Works with the carpet tile to provide outstanding performance in high foot traffic spaces
- Breathable backing system with a good Moisture Vapour Emission Rate (MVER). Suitable for slabs with higher RH%.
- Assists with high strength tuft bind to resist edge ravelling

INSTALLATION

- Greatly reduces sub-floor moisture concerns and saves money on mitigation
- Worry free installation with no visible moisture present using our FlexLok® tab System
- Quality construction offers reliability for the life of your installation

SUSTAINABILITY

- Enviro Bac® is a healthier carpet backing system, featuring no harmful chemicals
 - No PVC, BPA or Phthalates
- Carpet tiles featuring our Enviro Bac® backing system are recyclable through our product stewardship program.



1. Yarn
2. Primary Backing
3. Pre-Coat (latex binding layer adding tuft strength)
4. Enviro Bac®
5. Secondary Scrim

**Recycled content claim third party verified by SCS Global Services



Transparency SUSTAINABLE LEADERSHIP

Mohawk Group fully embraces transparency and is leading the industry in product transparency, which is at the core of programs like the Living Building Challenge. We hold current and relevant certifications and labels that illustrate our commitment to transparency and healthy indoor environments.



OUR COMMITMENT

As a local sponsor of the Living Future Institute of Australia (LFIA), we are committed to revolutionary programs that are redefining the green building movement. These include the LFIA's Living Building Challenge and Declare programs.

Declare Labels are a 'nutrition label' for the building industry, providing ingredients, source and manufacturing locations. This eliminates the mystery of product ingredients, giving you total product transparency.



Specifications

Art Exposure Collection
Academic View
Adaptable
Enlivened

DESIGN

Size	609.6mm x 609.6mm (24" x 24")
Surface Appearance	Textured Patterned Multi-Coloured Loop
Fibre Type	Colorstrand® SD Nylon
Dye Method	Solution Dyed
Installation Methods	
Adaptable	Vertical Ashlar, Quarter Turn, Multi-Directional
Academic View	Quarter Turn, Vertical Ashlar, Brick Ashlar, Monolithic, Multi-Directional
Enlivened	Quarter Turn, Vertical Ashlar, Brick Ashlar, Monolithic, Multi-Directional
Colours Available	
Adaptable	6
Academic View	6
Enlivened	6

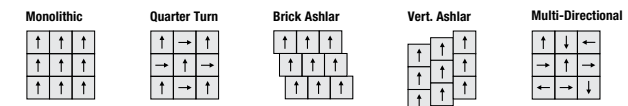
PERFORMANCE

Construction	Tufted
Gauge	1/12" (47.00 rows per 10cm)
Stain Release Technology	Eco Sentry Plus® Stain Protection
Soil Release Technology	Eco Sentry Plus® Soil Protection
Backing Material	Enviro Bac®
Flammability and Smoke Density#	Meets the requirements of NCC Spec. C1.10 relating to fire hazard properties for Class 2-9 buildings
Static Propensity	AATCC 134 <3.5 Kilovolts at 21°C & 20% Relative Humidity

SUSTAINABILITY

Certification	Declare Red List Free
Indoor Air Quality	Green Building Council compliant for VOC emission rate limits
Product Stewardship	This product is recyclable and qualifies for takeback at the end of life under the GH Commercial Product Stewardship Program

Installation Instructions:



These patterns contain inherent characteristics which may result in pattern run off and/or pattern appearance variations at the seams or tile edges (darker or lighter pattern lines). These characteristics are inherent in the patterns and are not manufacturing defects. Consideration to these characteristics should be given when selecting an installation method.

For current and complete specifications please visit ghcommercial.com

#Test results and certificates are available on request. Specifications and colourations are subject to manufacturing tolerances. As part of the manufacturer's continuous improvement program, the manufacturer reserves the right to change the specifications of or delete colours of this product without notice.

These Carpet Tile/Plank must be installed in accordance with AS2455 (Parts 1 & 2) and the GH Commercial Carpet Tile Installation Guidelines. While all care is taken, product images may vary in colour due to possible printing process variations. Images do not seek to duplicate the exact visual appearance, but serve merely as a guide or point of reference.



Manufactured under a quality, health and safety, and environmental system certified and complying with ISO 9001, AS 4801 and ISO 14001 by accredited certification bodies.

Australia

Godfrey Hirst Australia Pty Ltd
(ABN 58 000 849 758)
1300 444 778
ghcommercial.com

New Zealand

Godfrey Hirst New Zealand Limited
0800 500 210
ghcommercial.com