

TECHNICAL SPECIFICATIONS

Country of Origin:	Australia	Pile Weight:	1220g/m ²
Colours:	7 Standard	Backing:	EnduraBac®
Yarn:	100% Soft Solution Dyed Nylon	Installation Method:	Conventionally Laid
Surface Texture:	Cut Pile Twist	Type:	Residential Broadloom
Gauge:	39.4/10cm (1/10th Gauge)	Roll Width:	3.66
Product Thickness:	10.5mm	Pattern Repeat:	Not Applicable

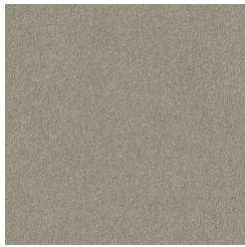
PERFORMANCE

Anti-Static:	(AATCC 134) <3.5KV at 21°C & 20% Relative Humidity
Flammability:	CRF 4.5kW/m ² (Conventionally Laid)~
Light Reflectance:	Available on Request
Stain Resistance:	Stain Block®
ACCS Rating:	Residential Extra Heavy Duty - 6 Star, Contract Medium Duty - 2 Star
Contract Guarantee:	5 Year Contract Guarantee Available on Request*
Smoke Value:	273% minutes (Conventionally Laid)

SUSTAINABILITY

PVC Minimisation:	PVC Free
Indoor Air Quality:	Green Building Council Compliant for VOC emission rate limits
Green Star:	Environmental Certification Scheme (ECS). Level 4 Maximum Points - Certificate #16069
Accreditation:	Manufactured under a quality, environmental and health and safety system certified and complying with ISO 9001, ISO 14001 and ISO 45001 by accredited certification bodies.

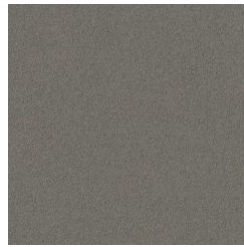
Modern Living



730
SIDEWALK



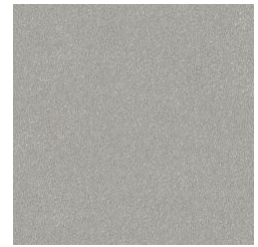
510
ALABASTER



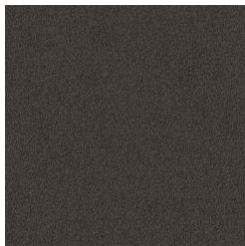
760
SHADOW



185
CINNAMON



715
PLATINUM



780
TRUFFLE



550
HAZLEWOOD

Specifications and colourations are subject to manufacturing tolerances. As part of the GH Commercial continuous improvement program, GH Commercial reserves the right to change the specifications of or delete colours of this product without notice. While all care is taken, product images may vary in colour due to possible printing process variations. Images do not seek to duplicate the exact visual appearance, but serve merely as a guide or point of reference.

All GH Commercial carpets must be installed in accordance with the latest AS2455 and any relevant GH Commercial Installation Instructions. ~Test results and certificates are available on request. *This guarantee is in addition to any rights consumers may have under Australian consumer laws. Terms and conditions apply - for full information in respect to the scope of the guarantee, please contact your GH Commercial Account Manager or our Head Office.