

Metropol 1500



TECHNICAL SPECIFICATIONS

Country of Origin:	China	m ² per box:	2.052
Colours:	12 Standard	m ² per pallet:	123.12
Product Thickness:	6.5mm	Finish:	Matte
Backing:	1.5mm Acoustic Backing	Surface:	Embossed
Hard Flooring Size:	228mm x 1500mm	Profile:	Micro Bevel
Installation Method:	Uniclic®	Substrate Layer:	Trigon® Core Technology (Limestone Composite)
Type:	Hybrid Flooring	Top Layer:	Decorative Film & Wear Layer
Wear Layer:	0.5mm	Protective Coating:	PUR
Units Per Box:	6 boards		

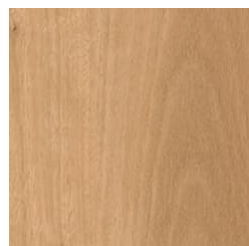
PERFORMANCE

Flammability:	(EN ISO 9239) CRF 11.1kW/m ²
Colourfast to light:	(EN ISO 105-B02) ≥6
Light Reflectance:	Available on Request
Contract Guarantee:	Available on request*
Smoke Value:	(EN ISO 9239) 210% minutes
Dimensional Stability:	(ISO 23999) Length: 0.0, Width: 0.0, Curling: 0.0
Abrasion Rating:	(EN 660-2) Group T
Sound Reduction:	Please refer to Godfrey Hirst Acoustic Performance specification sheet
Slip Resistance:	(AS 4586) P3

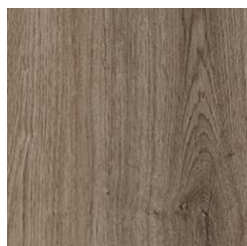
SUSTAINABILITY

Indoor Air Quality:	Green Building Council Compliant for VOC emission rate limits
Product Transparency:	Global Green Tag, GreenRate Level A certified
Accreditation:	Manufactured under a quality and environmental system certified and complying with ISO 9001 and ISO 14001 by an accredited certification body.

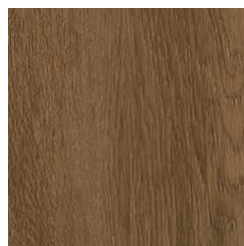
Metropol 1500



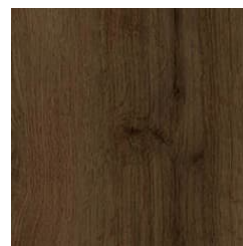
545
APPLE-BOX GUM



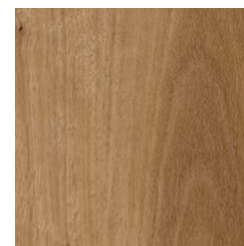
580
FALLOW OAK



560
BURL OAK



180
BURNT UMBER



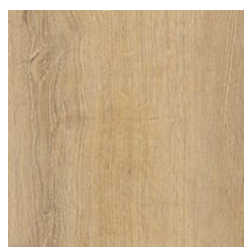
555
MARBLE SPOTTED GUM



700
PLATINUM GREY



100
ALABASTER



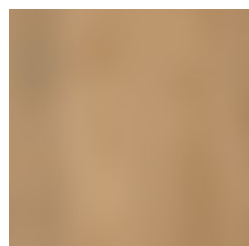
520
BRASS OAK



720
PEPPER OAK



790
SILHOUETTE OAK



300
SABLE OAK



500
CORN SILK

Specifications and colourations are subject to manufacturing tolerances. As part of the GH Commercial continuous improvement program, GH Commercial reserves the right to change the specifications of or delete colours of this product without notice. While all care is taken, product images may vary in colour due to possible printing process variations. Images do not seek to duplicate the exact visual appearance, but serve merely as a guide or point of reference.

All Godfrey Hirst hybrid floors products must be installed in accordance with relevant Australian Standards and in conjunction with the Godfrey Hirst Hybrid Flooring Installation Instructions.

*Terms and conditions apply to all commercial warranties - contact your GH Commercial Account Manager.

^ Subject to proper installation, maintenance and local building code/regulatory approval.