



Relaxing Floors

chillD restD mellowD Fractal Ground



Seemingly random shapes and forms found in nature often appear haphazard. But upon closer inspection, there is a structure underlying these natural arrangements. And as we look closer and closer, the patterns repeat over and over. These are fractals.



When we look at a tree, first we see big branches growing out of the trunk, then we see smaller branches growing out of each big branch. As we keep zooming in, finer and finer branches appear, all the way down to the smallest twigs.

In basing design on the stress-reductive quality found in fractals, the transdisciplinary team of 13&9 Design, Fractals Research, and Mohawk Group are tapping into our deep-seated desire to see patterns, to connect to nature and to have more inspiring and relaxing environments in which to live and work.





restD 967 Pause, Fractal Ground 949 Easy Breezy (Brick Ashlar Installation)

Collaborators

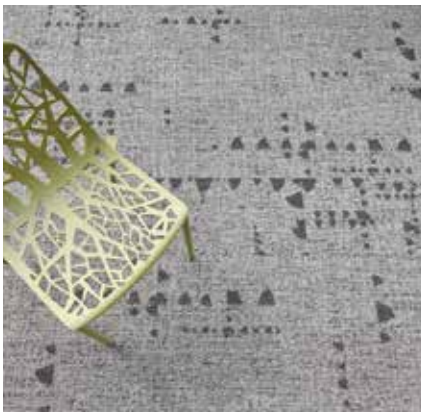
DESIGNERS, THINKERS, MAKERS



Left to right: Richard Taylor, PHD, Founder of Fractals Research; Jackie Dettmar, VP of Design and Product Development, Mohawk Group; Anastasija and Martin Lesjak, CEOs, 13&9 Design.

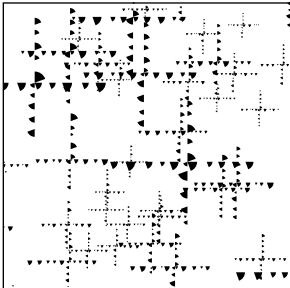
Fractals are the building blocks of many of nature’s patterns and have been scientifically proven to reduce stress and so provide benefits to physical health. This visual language is the basis for Relaxing Floors, a modular system designed by 13&9 in collaboration with Fractals Research and Mohawk Group.

Relaxing Floors is the culmination of art, science and human-centered design based on fractal patterns. Utilising fractals gives our eyes a break from the digital world and delivers the essence of nature to the contract build environment.

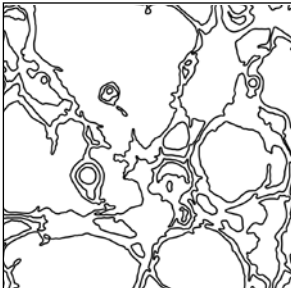




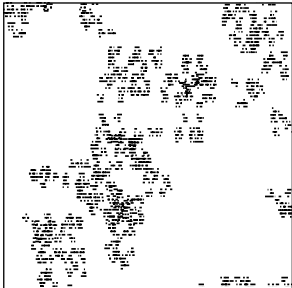
Although all fractals are complex, the level of complexity varies between patterns. This complexity is measured by a parameter labeled D. Patterns with mid-range complexity—a mid-D value—are the most common in natural scenery and it is these patterns that reduce the observer’s stress-levels. All of the Relaxing Floors patterns have been optimized to have a mid-D value—as denoted by the “D” suffix on each of the pattern names.



chillD is a computer generated fractal visual grounded by triangular segment-shaped seeds.



restD is an organic design in which neurons twist and turn as they weave across the carpet.



mellowD utilises a line-shaped seed which repeats at different magnifications.

Fractal Ground offers a coordinating organic groundcover visual that may be used with any of the other patterns or by itself.



829 Focus



922 Sanctuary



946 Awakening



949 Easy Breezy



967 Pause



969 Solitude



961 Harmony



965 Blue Bliss



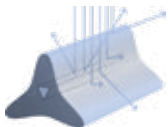


chillID 965 Blue Bliss (Brick Ashlar Installation)
Opposite: Fractal Ground 949 Easy Breezy (Brick Ashlar Installation)



Features & Benefits

Relaxing Floors offers a sustainable and worry-free system of performance, utilising Mohawk Group’s industry-leading Duracolor Tricolor Fibre, award-winning Heathered Hues yarn, and high-performance Enviro Bac® carpet tile backing.



Duracolor Tricolor

Delivering exceptional stain resistance, colourfastness, durability, colour clarity and enhanced soil performance, Duracolor Tricolor builds upon the trusted Duracolor promise with over 90 million metres installed since 1992.



- Permanent built-in stain resistance



- Optimises soil hiding, soil removal and colour clarity



- Resists crushing for enhanced durability and longer lifecycles

Product Transparency

GH Commercial fully embraces sustainability with the Mohawk Group brand and is leading the industry in product transparency through programs like Declare and the Living Building Challenge. Our carpet tiles hold current and relevant certifications and labels that illustrate our commitment to creating healthy indoor environments. The Relaxing Floors collection is Declare Red List Free, with all ingredients disclosed on the Declare ‘nutrition label, eliminating the mystery of product ingredients and giving you total product transparency.

Enviro Bac®

Enviro Bac® is a dimensionally stable, breathable carpet tile backing system offering exceptional performance features. Made locally in Australia, Enviro Bac® is a healthier carpet backing solution that has been trusted in commercial buildings around the country for over 20 years.



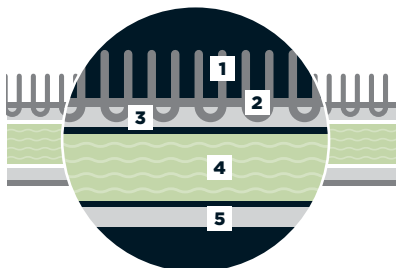
- A healthier backing system: No PVC, BPA or Phthalates



- Exceptional dimensional stability to prevent stretching, shrinking or curling



- Breathable backing system with a good Moisture Vapour Emission Rate (MVER)



1. Yarn
2. Primary Backing
3. Pre-Coat
(latex binding layer adding tuft strength)
4. Enviro Bac®
5. Secondary Scrim

Specifications

Relaxing Floors Collection
chillD, Fractal Ground, mellowD, restD
Carpet Plank

DESIGN

| | |
|----------------------|---|
| Country of Origin | Australia |
| Size | 304.8mm x 914.4mm (12" x 36") |
| Surface Appearance | Textured Patterned Multi-Coloured Loop |
| Fibre Type | Duracolor® Tricor Premium Nylon |
| Dye Method | Solution Dyed |
| Installation Methods | Monolithic / Monolithic Stepping / Half-Lap / Plank Half-Lap / Brick Ashlar / Random / Herringbone / Basket Weave |
| Colours Available | 8 (in each product) |
| Available Options† | Enviro Bac Plus® (Cushion Backed) |

PERFORMANCE

| | |
|-------------------------------|--|
| Construction | Tufted |
| Gauge | 1/12th Gauge (47/10cm) |
| Stain Release Technology | Permanent, Built into the Fibre |
| Soil Release Technology | EcoSentry Soil Protection |
| Backing Material | Enviro Bac® |
| Flammability & Smoke Density# | Meets the requirements of NCC Spec. C1.10 relating to fire hazard properties for flooring in Class 2-9 buildings Meets the requirements of the New Zealand Building Code Section C3 - Fire Affecting Areas Beyond The Fire Source |
| Static Propensity | AATCC 134 < 3.5kV at 21°C & 20% Relative Humidity |

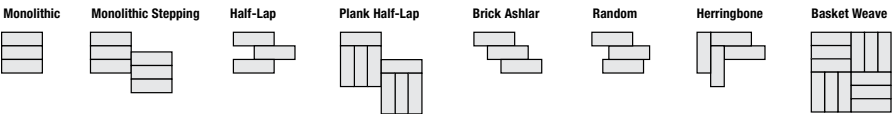
SUSTAINABILITY

| | |
|----------------------|--|
| PVC Minimisation | PVC Free |
| Indoor Air Quality# | Green Building Council Compliant for VOC Emission Rate Limits |
| Product Stewardship | This product is recyclable and qualifies for takeback at the end of life under our product stewardship program. |
| Product Transparency | Declare Red List Free |
| Accreditation | Manufactured under a quality, environmental and health and safety system certified and complying with ISO 9001, ISO 14001 and AS 4801 by an accredited certification body. |

GUARANTEES/WARRANTIES*

| | |
|-------------|--|
| Australia | 15 Years guarantee available on request* |
| New Zealand | Comprehensive warranties available. All warranties are issued on a project by project basis. Please contact us to discuss your requirements further. |

Installation Instructions:



These patterns contain inherent characteristics which may result in pattern run off and/or pattern appearance variations at the seams or tile edges (darker or lighter pattern lines). These characteristics are inherent in the patterns and are not manufacturing defects. Consideration to these characteristics should be given when selecting an installation method.

All carpet tiles and planks must be installed in accordance with AS2455 Parts 1 & 2 (latest version) and the GH Commercial Carpet Tile/Plank Installation Instructions.

Chair pads are recommended under office chairs with roller castors to preserve appearance retention, act as a deterrent toward delamination and to prevent premature or accelerated wear. Walk-off tiles from the Tuff Stuff II Collection are recommended at entryways to reduce soiling.

Specifications and colourations are subject to manufacturing tolerances. As part of the GH Commercial continuous improvement program, specifications may be changed or colours deleted without notice. For current and complete specifications please visit ghcommercial.com

Images do not seek to duplicate the exact visual appearance, but serve merely as a guide or point of reference. While all

care is taken, product images may vary in colour due to possible printing process and/or light variations.

*Test results are available on request.

*Minimum order quantity may apply. Contact your GH Commercial Account Manager for information.

*These guarantees/warranties are in addition to any rights consumers may have under Australian and/or New Zealand consumer laws.

*Terms and conditions apply - for full information in respect to the scope of the warranty please contact your GH Commercial Account Manager or our Head Office.



Mohawk Group



Australia
Godfrey Hirst Australia Pty Ltd
(ABN 58 000 849 758)
1300 444 778
ghcommercial.com

New Zealand
Godfrey Hirst New Zealand Limited
0800 500 210
ghcommercial.com