

## TECHNICAL SPECIFICATIONS

Country of Origin:	Australia	Pile Weight:	675g/m <sup>2</sup>
Colours:	4 Standard	Backing:	Action Bac®
Yarn:	100% Statron Plus® Solution Dyed Nylon	Installation Method:	Direct Stick, Conventionally Laid, Dual Bond
Surface Texture:	Patterned Loop Pile	Type:	Commercial Broadloom
Gauge:	47.2/10cm (1/12th Gauge)	Roll Width:	4.00
Product Thickness:	6mm	Pattern Repeat:	Not Applicable

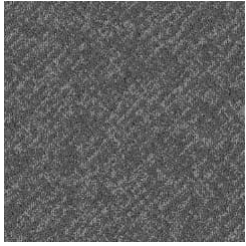
## PERFORMANCE

Anti-Static:	(AATCC 134) <3.5KV at 21°C & 20% Relative Humidity
Flammability:	Meets the requirements of NCC Spec. C1.10 relating to fire hazard properties for flooring in Class 2-9 buildings (including health and aged care buildings)~
Light Reflectance:	Available on Request
Stain Resistance:	Stain Warden®
Biocontaminant Control:	Bioshield® Antimicrobial Control
ACCS Rating:	Contract Extra Heavy Duty - 4 Star
Contract Guarantee:	7 Year Contract Guarantee Available on Request*
Recommended Adhesive:	Refer to our GH Commercial Adhesive Guide <a href="http://www.ghcommercial.com">www.ghcommercial.com</a>

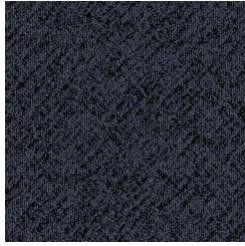
## SUSTAINABILITY

PVC Minimisation:	PVC Free
Indoor Air Quality:	Green Building Council compliant for VOC emission rate limits
Green Star:	Environmental Certification Scheme (ECS). Level 4 Maximum Points - Certificate #22242
Accreditation:	Manufactured under a quality, environmental and health and safety system certified and complying with ISO 9001, ISO 14001 and ISO 45001 by accredited certification bodies.

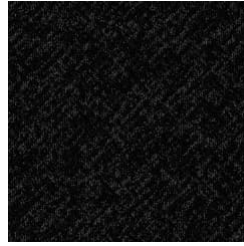
# Agility 4M



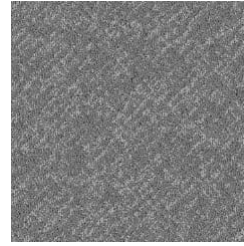
725  
WILLOW



875  
WATERFALL



795  
ACROBAT



735  
MERCURY

Specifications and colourations are subject to manufacturing tolerances. As part of the GH Commercial continuous improvement program, GH Commercial reserves the right to change the specifications of or delete colours of this product without notice. While all care is taken, product images may vary in colour due to possible printing process variations. Images do not seek to duplicate the exact visual appearance, but serve merely as a guide or point of reference.

All GH Commercial carpets must be installed in accordance with the latest AS2455 and any relevant GH Commercial Installation Instructions. ~Test results and certificates are available on request. \*This guarantee is in addition to any rights consumers may have under Australian consumer laws. Terms and conditions apply - for full information in respect to the scope of the guarantee, please contact your GH Commercial Account Manager or our Head Office.