

Knights Point II



TECHNICAL SPECIFICATIONS

Country of Origin:	Australia	Pile Weight:	680g/m ²
Colours:	8 Standard	Backing:	Action Bac®
Yarn:	100% Statron Plus® Solution Dyed Nylon	Installation Method:	Direct Stick, Conventionally Laid
Surface Texture:	Level Loop Pile	Type:	Commercial Broadloom
Gauge:	39.4/10cm (1/10th Gauge)	Roll Width:	4.00
Product Thickness:	5.5mm	Pattern Repeat:	1.0cm (w) x 1.25cm (l)

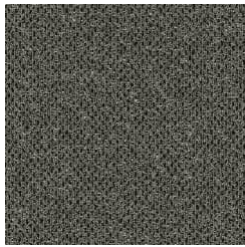
PERFORMANCE

Anti-Static:	(AATCC 134) <3.5KV at 21°C & 20% Relative Humidity
Flammability:	Meets the requirements of NCC Spec. C1.10 relating to fire hazard properties for flooring in Class 2-9 buildings~
Stain Resistance:	Stain Warden®
Biocontaminant Control:	Bioshield® Antimicrobial Control
ACCS Rating:	Residential Extra Heavy Duty - 6 Star, Contract Extra Heavy Duty - 4 Star
Contract Warranty:	7 Year Contract Guarantee Available on Request*
Recommended Adhesive:	Refer to our GH Commercial Adhesive Guide www.ghcommercial.com

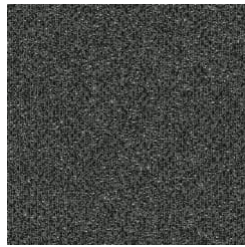
SUSTAINABILITY

PVC Minimisation:	PVC Free
Indoor Air Quality:	Green Building Council Compliant for VOC emission rate limits
Green Star:	Environmental Certification Scheme (ECS) Level 4 Maximum Points - Certificate #21232
Accreditation:	Manufactured under a quality, environmental and health and safety system certified and complying with ISO 9001, ISO 14001 and ISO 45001 by accredited certification bodies.

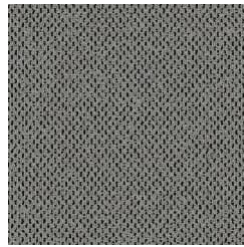
Knights Point II



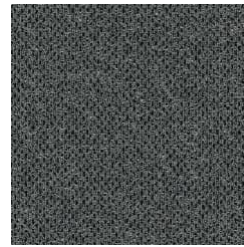
49
SPECKLE ROCK



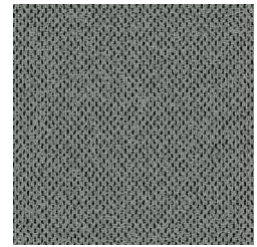
97
MICA



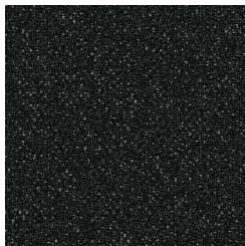
91
QUARTZITE



9
MARBLE



90
GALENA



99
ONYX



14
SCORIA



34
SODALITE

Specifications and colourations are subject to manufacturing tolerances. As part of the GH Commercial continuous improvement program, GH Commercial reserves the right to change the specifications of or delete colours of this product without notice. While all care is taken, product images may vary in colour due to possible printing process variations. Images do not seek to duplicate the exact visual appearance, but serve merely as a guide or point of reference.

All GH Commercial carpets must be installed in accordance with the latest AS2455 and any relevant GH Commercial Carpet Installation Instructions.
Chair pads are recommended under office chairs with roller castors to preserve appearance retention, act as a deterrent toward delamination and to prevent premature or accelerated wear. Walk-off tiles from the Tuff Stuff II Collection are recommended at entryways to reduce soiling.
~Test results and certificates are available on request.
*This warranty is in addition to any rights consumers may have under Australian consumer laws. Terms and conditions apply - for full information in respect to the scope of the guarantee please contact your GH Commercial Account Manager or our Head Office.