

TECHNICAL SPECIFICATIONS

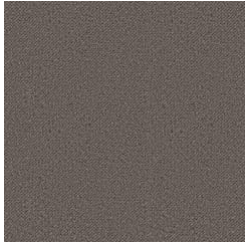
Country of Origin:	New Zealand	Pile Weight:	950g/m ²
Colours:	8 Standard	Backing:	Jute
Yarn:	100% Wool	Installation Method:	Conventionally Laid
Surface Texture:	Level Loop Pile	Roll Width:	3.66
Gauge:	12.6/10cm (5/16th Gauge)	Pattern Repeat:	Not Applicable
Product Thickness:	9.5 (+/- 1.0)mm		

PERFORMANCE

Anti-Static:	(AATCC 134) <3.5KV at 21°C & 20% Relative Humidity
Flammability:	CRF 4.5Kw/m ² (Conventionally Laid)~
Light Reflectance:	Available on Request
Stain Resistance:	Natural Wool Fibre Stain Resistance
ACCS Rating:	Residential Heavy Duty - 4 Star, Contract Light Duty - 1 Star
Contract Guarantee:	5 Year Contract Guarantee Available on Request*
Smoke Value:	114% minutes (Conventionally Laid)

SUSTAINABILITY

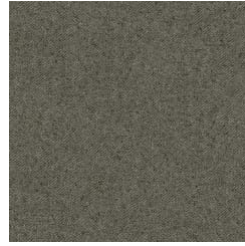
PVC Minimisation:	PVC Free
Indoor Air Quality:	Green Building Council Compliant for VOC emission rate limits
Green Star:	Environmental Certification Scheme (ECS). Level 4 Maximum Points - Certificate #14254
Accreditation:	Manufactured under a quality and environmental system certified and complying with ISO 9001 and ISO 14001 by an accredited certification body.



44
BARK



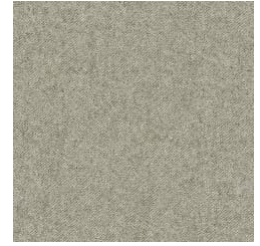
111
STONE



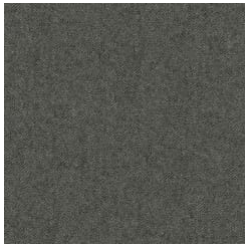
97
CLIFF ROCK



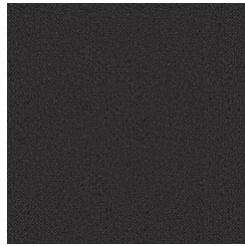
13
EARTH



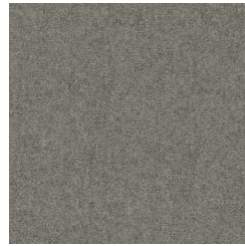
91
SAND STORM



92
PEPPER



94
ASH



93
BLUESTONE

Specifications and colourations are subject to manufacturing tolerances. As part of the GH Commercial continuous improvement program, GH Commercial reserves the right to change the specifications of or delete colours of this product without notice. While all care is taken, product images may vary in colour due to possible printing process variations. Images do not seek to duplicate the exact visual appearance, but serve merely as a guide or point of reference.

All GH Commercial carpets must be installed in accordance with the latest AS2455 and any relevant GH Commercial Installation Instructions. ~Test results and certificates are available on request. *This warranty is in addition to any rights consumers may have under Australian consumer laws. Terms and conditions apply - for full information in respect to the scope of the warranty, please contact your GH Commercial Account Manager or our Head Office.