

# Impressionist



## TECHNICAL SPECIFICATIONS

Country of Origin:	New Zealand	Pile Weight:	1360g/m <sup>2</sup>
Colours:	6 Standard	Backing:	Jute
Yarn:	80% Wool / 20% Synthetic	Installation Method:	Conventionally Laid
Surface Texture:	Cut Pile Plush	Type:	Residential Broadloom
Gauge:	31.5/10cm (1/8th Gauge)	Roll Width:	3.66
Product Thickness:	10.5mm	Pattern Repeat:	Not Applicable

## PERFORMANCE

Anti-Static:	(AATCC 134) <3.5KV at 21°C & 20% Relative Humidity
Flammability:	CRF 4.5kW/m <sup>2</sup> (Conventionally Laid)~
Light Reflectance:	Available on Request
Stain Resistance:	Natural Wool Fibre Stain Resistance
ACCS Rating:	Residential Extra Heavy Duty - 5 Star, Contract Medium Duty - 2 Star
Contract Warranty:	5 Year Contract Guarantee Available on Request*
Smoke Value:	750% minutes (Conventionally Laid)

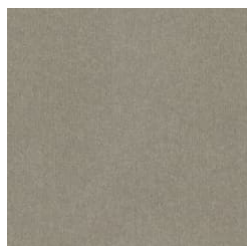
## SUSTAINABILITY

PVC Minimisation:	PVC Free
Indoor Air Quality:	Green Building Council Compliant for VOC emission rate limits
Green Star:	Environmental Certification Scheme (ECS). Level 4 Maximum Points - Certificate #11090
Accreditation:	Manufactured under a quality and environmental system certified and complying with ISO 9001 and ISO 14001 by an accredited certification body.

# Impressionist



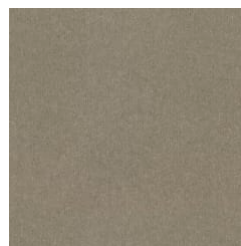
90  
STONE



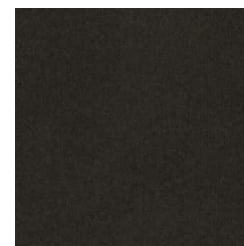
91  
MIST



9  
PEWTER



4  
ASH



99  
FLINT



94  
LEAD

Specifications and colourations are subject to manufacturing tolerances. As part of the GH Commercial continuous improvement program, GH Commercial reserves the right to change the specifications of or delete colours of this product without notice. While all care is taken, product images may vary in colour due to possible printing process variations. Images do not seek to duplicate the exact visual appearance, but serve merely as a guide or point of reference.

All GH Commercial carpets must be installed in accordance with the latest AS2455 and any relevant GH Commercial Installation Instructions. ~Test results and certificates are available on request. \*This warranty is in addition to any rights consumers may have under Australian consumer laws. Terms and conditions apply - for full information in respect to the scope of the warranty, please contact your GH Commercial Account Manager or our Head Office.